

adaptbrdy.czu.cz



D 2. 1

Establishment of Demonstration Plots

Project 101074426-LIFE21-CCA-CZ-LIFE Adapt Brdy

Climate Change Adaptation of Forests in the Brdy Highland



Version	Date	Author / Organization
1.1	3. 8. 2023	Ing. Petr Macháček / VLS ČR s.p.

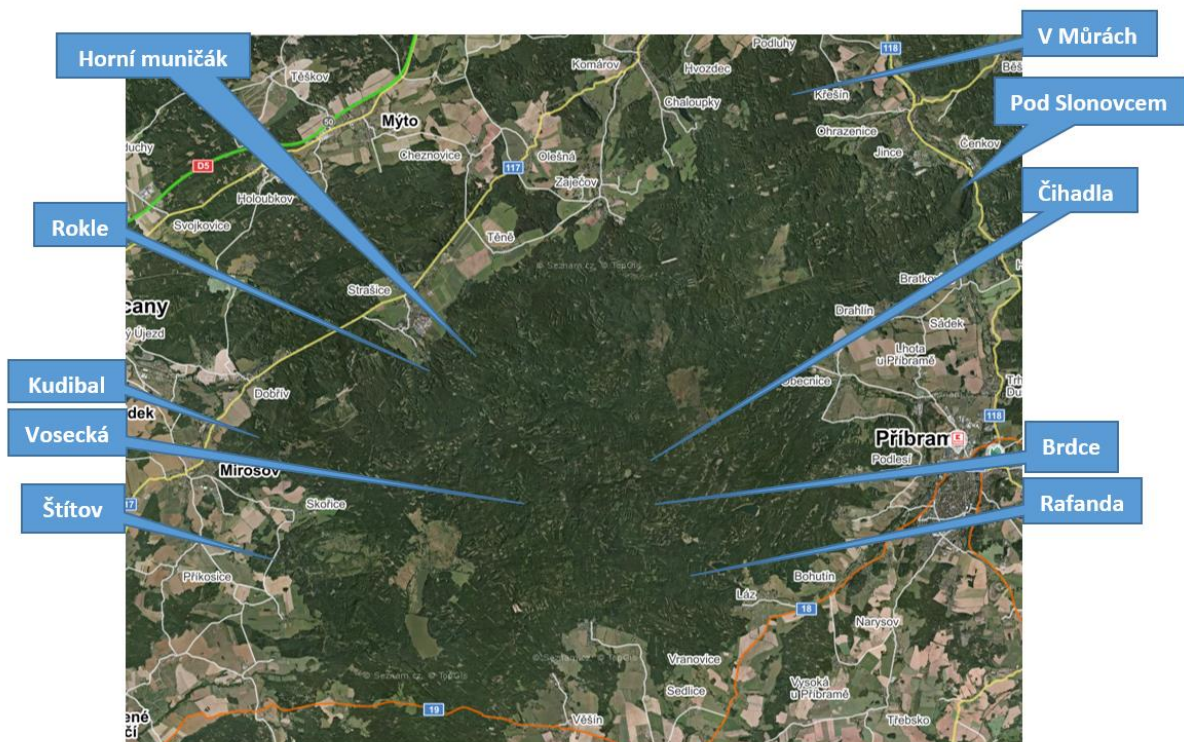
Co-funded by the European Union and the Ministry of the Environment. Views and opinions expressed are however those of the author(s) only and do not necessarily reflect those of the European Union and the Ministry of the Environment or CINEA. Neither the European Union, the Ministry of the Environment nor the granting authority can be held responsible for them.

Content

1. Characteristics of Demonstration Plots	3
2. Data on Demonstration Plots.....	4
2.1. Pod Slonovcem.....	4
2.2. V Múrách.....	7
2.3. Brdce	10
2.4. Čihadla	13
2.5. Rafanda.....	16
2.6. Vosecká.....	19
2.7. Štítov.....	22
2.8. Kudíbal	25
2.9. Rokle	28
2.10. Horní muničák.....	31

1. Characteristics of Demonstration Plots

Establishment of Demonstration Plots by the Application of Selection Management Principles. Demonstration plots are parts of forest with an area of 40-75 hectares, where selection management principles will be applied and demonstrated. Ten demonstration plots have been identified.



2. Data on Demonstration Plots

2.1. Pod Slonovcem

The acreage: 49,10 hectares

FMP: 11121 Jince

Predominant forest typ: 4K

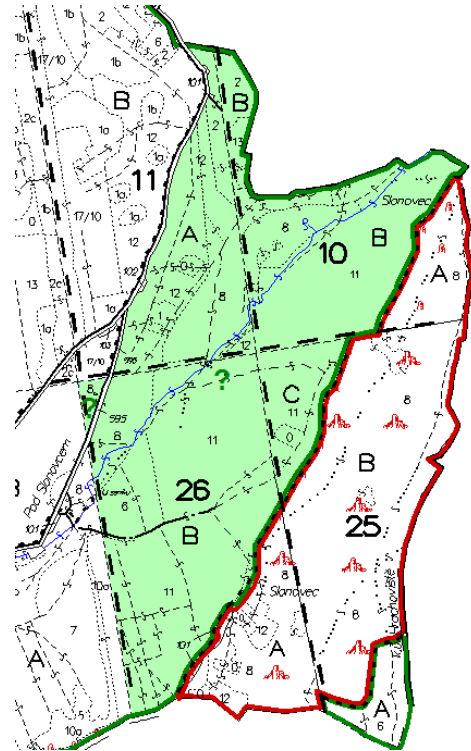
Number forest stands: 14

Average age: 95 yers

Percentage of stands over 80 years old: 73,5 %

Percentage of stands over 100 years old: 73,5 %

Percentage of tree species %	
Norway spruce	42,95
Scots pine	35,14
European larch	12,74
Durmast oak	2,00
European beech	3,07
Silver birch	1,88
Sycamore maple	0,04
European ash	0,15
European hornbeam	2,03



Photodocumentation Pod Slonovcem:





2.2. V Múrách

The acreage: 40,42 hectares

FMP: 11121 Jince

Predominant forest typ: 4P

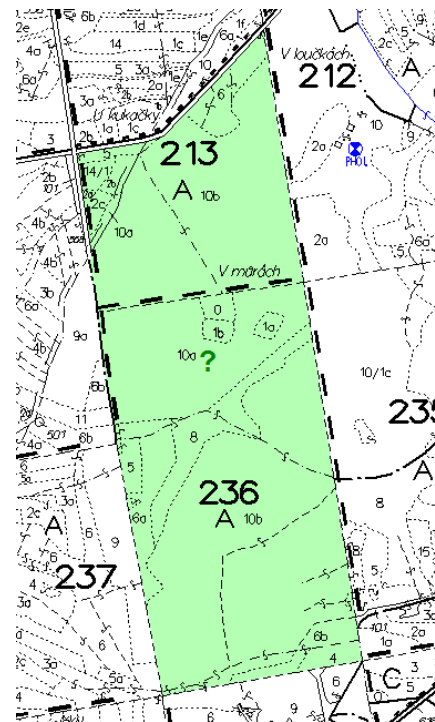
Number forest stands: 19

Average age: 88 yers

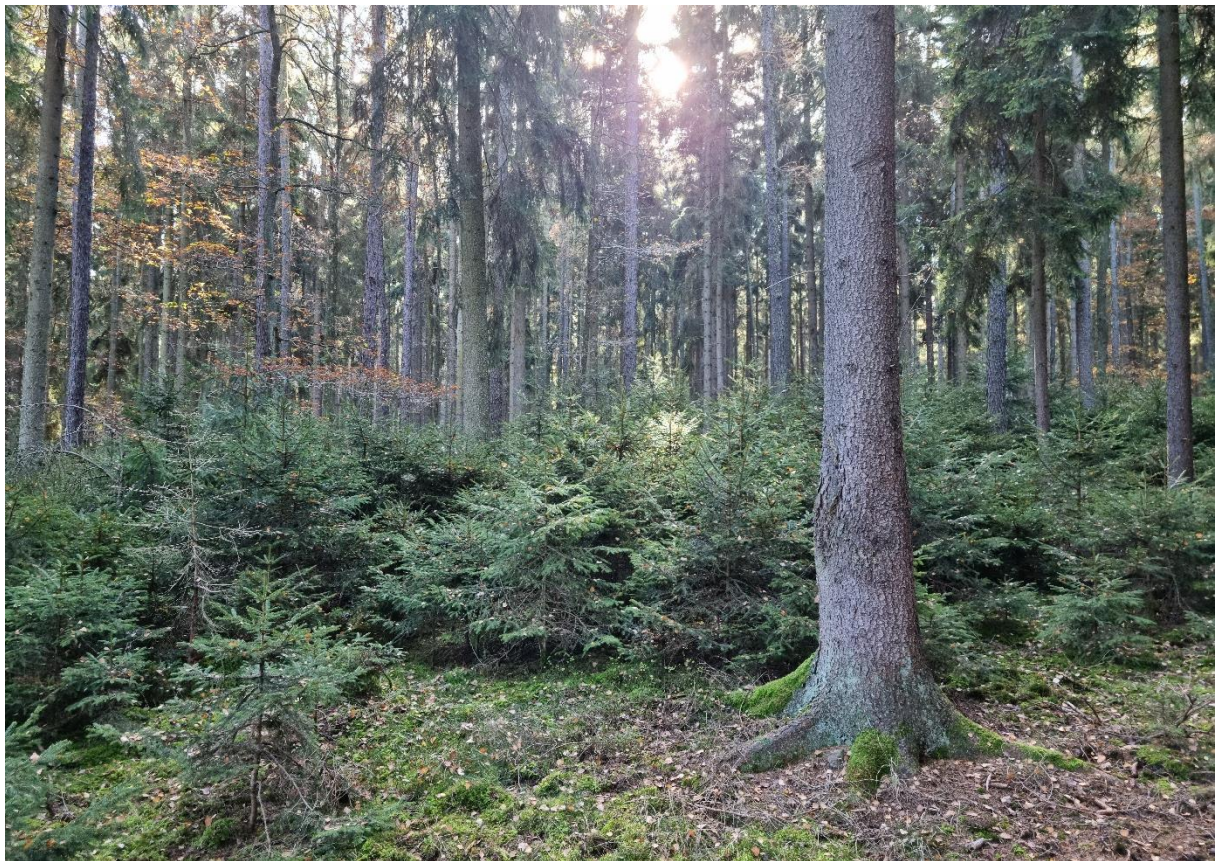
Percentage of stands over 80 years old: 80,9 %

Percentage of stands over 100 years old: 0,1 %

Percentage of tree species %	
Norway spruce	54,14
Scots pine	9,64
European larch	25,87
Durmast oak	6,24
European beech	0,37
Silver birch	3,74



Photodocumentation V Můrách:





2.3. Brdce

The acreage: 72,94 hectares

FMP: 11214 Obecnice

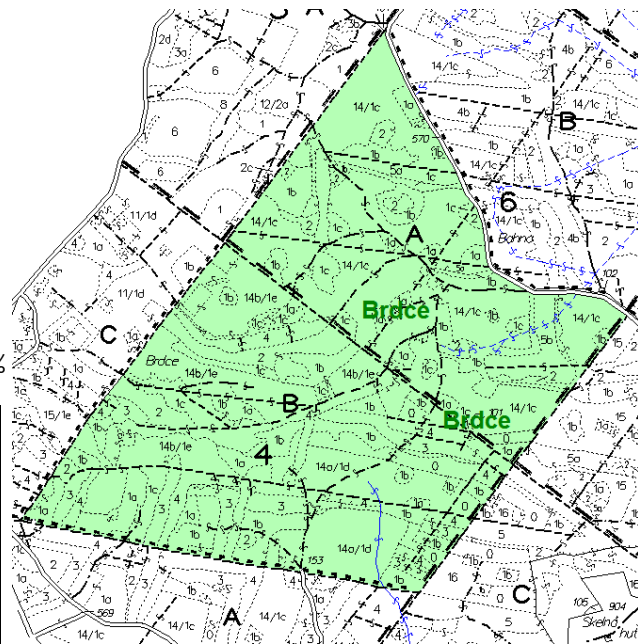
Predominant forest typ: 5K

Number forest stands: 20

Average age: 44 yers

Percentage of stands over 80 years old: 25 %

Percentage of stands over 100 years old: 25 %



Percentage of tree species %	
Norway spruce	89,91
Silver fir	2,81
European larch	0,75
European beech	5,12
Silver birch	1,13
European mountain ash	0,28

Photodocumentation Brdce:





2.4. Čihadla

The acreage: 69,89 hectares

FMP: 11214 Obecnice

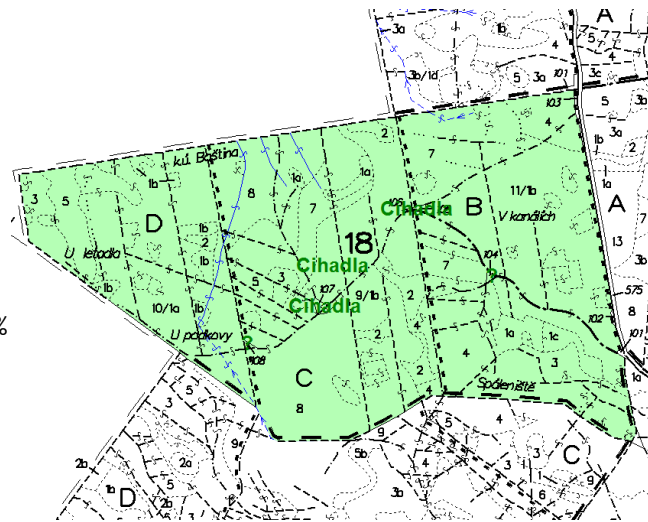
Predominant forest typ: 6M

Number forest stands: 22

Average age: 54 yers

Percentage of stands over 80 years old: 23,6 %

Percentage of stands over 100 years old: 9 %



Percentage of tree species %	
Norway spruce	95,55
Spruce other species	0,18
European larch	1,43
European beech	2,85

Photodocumentation Čihadla:





2.5. Rafanda

The acreage: 51,94 hectares

FMP: 11319 Nepomuk

Predominant forest typ: 5M

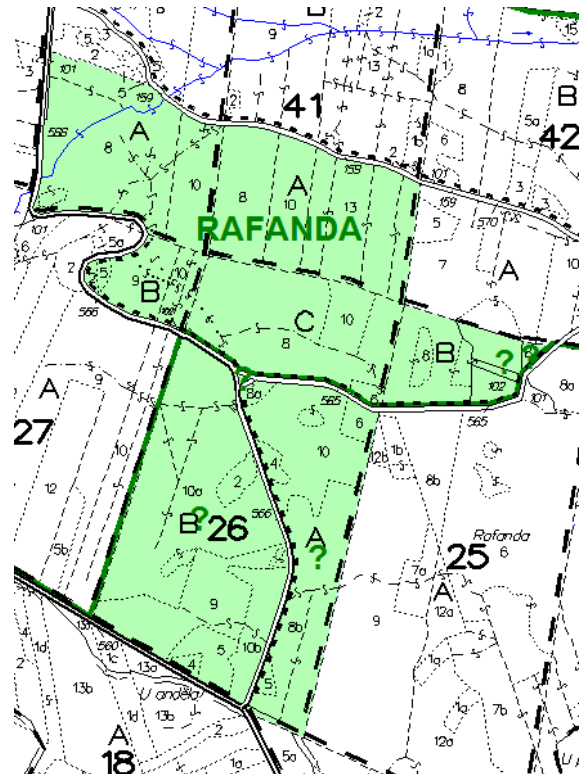
Number forest stands: 25

Average age: 84 yers

Percentage of stands over 80 years old: 57,6 %

Percentage of stands over 100 years old: 12,7 %

Percentage of tree species %	
Norway spruce	64,42
Scots pine	22,76
European larch	12,61
Douglas fir	0,21



Photodocumentation Rafanda:





2.6. Vosecká

The acreage: 53,25 hectares

FMP: 11319 Nepomuk

Predominant forest typ: 6N

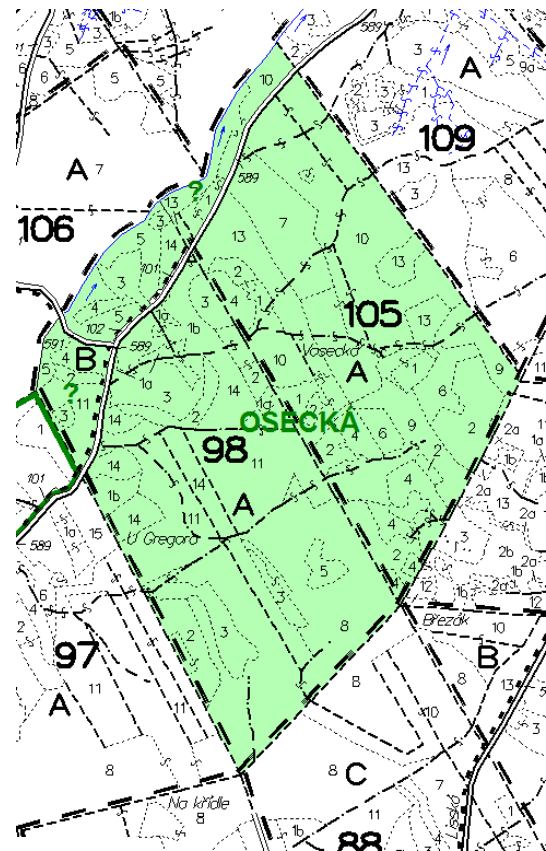
Number forest stands: 16

Average age: 73 yers*

Percentage of stands over 80 years old: 63,3 %*

Percentage of stands over 100 years old: 23,1 %*

Percentage of tree species %*	
Norway spruce	85,13
Scots pine	3,96
Silver fir	0,52
European larch	6,22
European beech	4,17



* data from FMP before the bark beetle disaster, during the years 2020-2021, most of the older spruce stands were cut down, from 2022 the clearing is being restored with nets, planting, and parts are waiting for natural regeneration.

Photodocumentation Vosecká:





2.7. Štítov

The acreage: 53,98 hectares

FMP: 11422 Mirošov

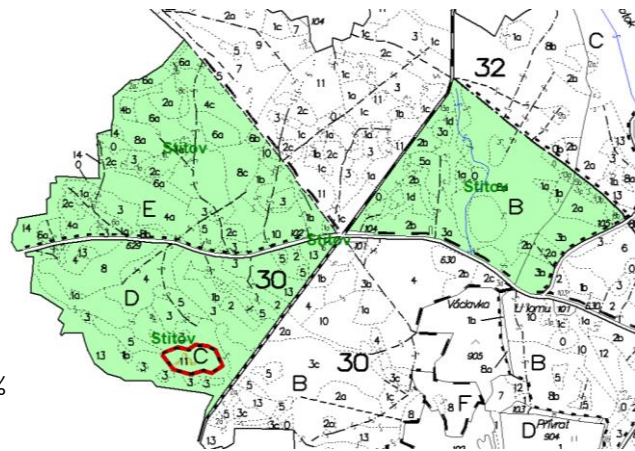
Predominant forest typ: 40

Number forest stands: 42

Average age: 54 yrs

Percentage of stands over 80 years old: 20,4 %

Percentage of stands over 100 years old: 20,4 %



Percentage of tree species %	
Norway spruce	54,77
Scots pine	0,22
Silver fir	4,10
European larch	0,10
Douglas fir	0,67
Durmast oak	7,52
European beech	24,01
Silver birch	0,75
Sycamore maple	1,40
European ash	1,31
Black alder	5,06
Grey alder	0,09

Photodocumentation Štítov:





2.8. Kudibal

The acreage: 54,22 hectares

FMP: 11422 Mirošov

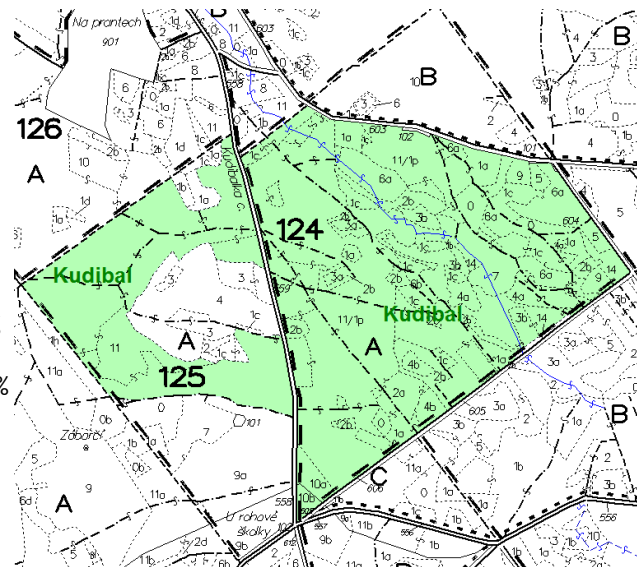
Predominant forest typ: 4P

Number forest stands: 21

Average age: 71 yers

Percentage of stands over 80 years old: 58,4 %

Percentage of stands over 100 years old: 56,2 %



Percentage of tree species %	
Norway spruce	78,53
Scots pine	7,38
Silver fir	3,99
European larch	0,69
Douglas fir	0,44
Durmast oak	5,17
European beech	2,86
Silver birch	0,77
Black alder	0,18

Photodocumentation Kudibal:





2.9. Rokle

The acreage: 47,60 hectares

FMP: 11522 Strašice

Predominant forest typ: 4P

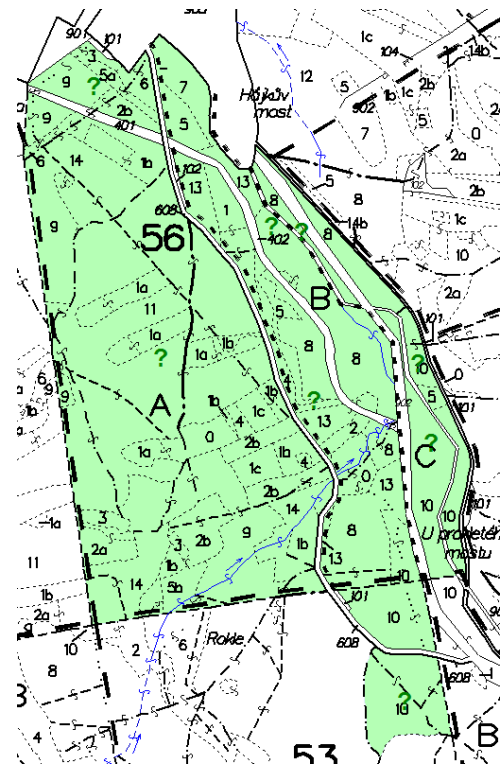
Number forest stands: 27

Average age: 79 yers

Percentage of stands over 80 years old: 59,2 %

Percentage of stands over 100 years old: 33,8 %

Percentage of tree species %	
Norway spruce	66,37
Scots pine	5,25
Eastern white pine	0,39
Silver fir	5,70
European larch	9,94
Douglas fir	1,49
Durmast oak	2,40
European beech	5,61
Silver birch	1,71
Black alder	1,13



Photodocumentation Rokle:





2.10. Horní muničák

The acreage: 43,70 hectares

FMP: 11522 Strašice

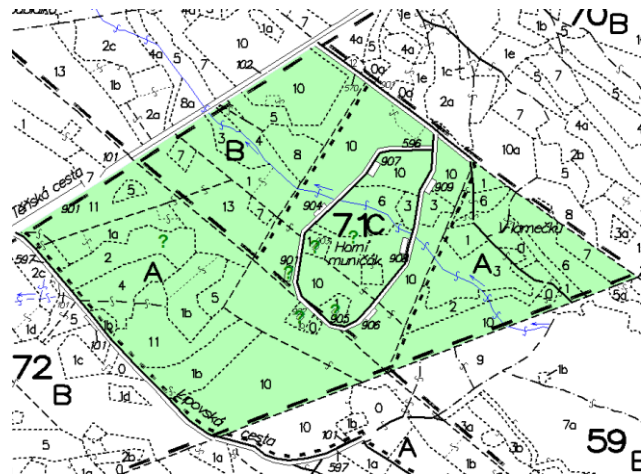
Predominant forest typ: 4I

Number forest stands: 16

Average age: 60 yers

Percentage of stands over 80 years old: 37,4 %

Percentage of stands over 100 years old: 13,1 %



Percentage of tree species %	
Norway spruce	61,17
Scots pine	7,39
Silver fir	0,50
European larch	18,91
Durmast oak	1,45
European beech	2,29
Silver birch	6,07
Black alder	1,69
European mountain ash	0,55

Photodocumentation Horní muničák:



